

Welcome to Year 2



Who's Who in Year 2

Ms Caroline Freedman **2CF**

Blondie Hall (Mon Tues am) Marzena (Weds-Fri am)

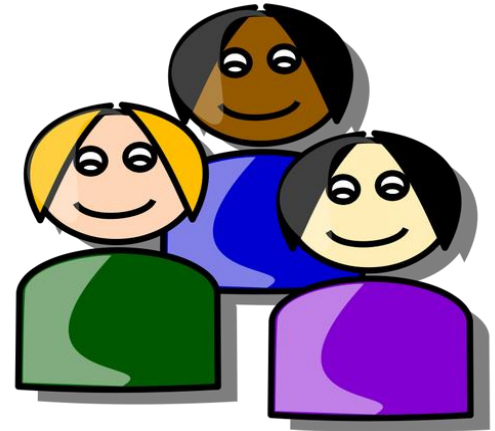
Miss Oyku Dursun **2OD**

Maria (am Teaching Assistant)

Ms Emily Black **2EB**

Mandy Clarke (am Teaching Assistant)

Halima (SEN Support)



Expectations – our school charter

- We are kind to each other
- We talk respectfully and listen to each other
- We keep our hands and feet to ourselves
- We walk at all times in the building
- We follow instructions immediately
- We always use our manners
- We look after the equipment in the classroom and the playground

The Curriculum



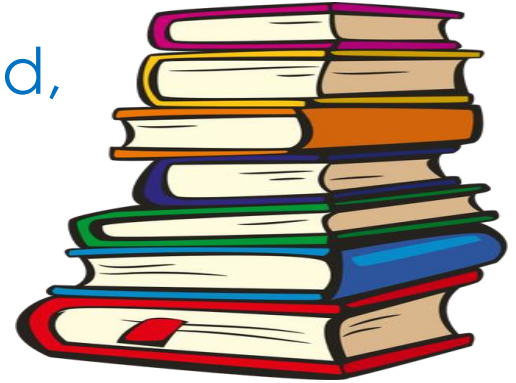
- Daily English
- Daily Maths
- **Science:** Materials / Living things and their habitats / Plants / Animal and human life cycles
- **Topics:** Local Area / Walter Tull / Great Fire of London / Rainforest / Alexandra Palace / Seaside

- Daily guided reading session
- Spellings / Phonics – phonics revision through spelling then focus on both spelling rules and words to learn
- Daily handwriting sessions
- PE, Art/DT, Computing*, Music, RE and PSHE – led by specialist and class teachers
- Spanish – led by class teachers with a focus on oracy

* including internet safety

English topics for Autumn term

- The Kindest Red - description of a kind, Rights Respecting school
- Ghanaian Goldilocks - innovating a traditional tale
- Tell Me a Dragon - create and describe our own dragon
- Antarctica - description of a trip across Antarctica



Home learning

- Maths and spelling homework will be set every Friday and should be returned the following Tuesday.
- Half-termly enrichment activities will also be set which will link to the class topic
- **All children should read for at least 15 minutes every day.** Please login and use **Bug Club** when details are sent home
- Times Tables Rock Stars logins will also be provided later to help with learning times tables (Year 2: 2, 5 & 10)
- This year, homework will start on Friday 26th September



Educational visits/workshops

We have planned several exciting educational visits for the year, details of which will be sent out before each visit. Some visits will require a financial contribution – please speak to your child's class teacher if you are unable to meet this cost.

We should be running curriculum days in school linked to our topics:

- Autumn: East Finchley Walk, North Finchley Mosque
- Spring: Alexandra Palace (bus)
- Summer: Canvey Island (coaches)



Reminders

- Full attendance and punctuality are expected. The register is taken at **8:55am**. Please collect your child promptly from the top playground at **3.25pm**
- Full and correct uniform must be worn every day except on PE days when PE Kits should be worn (**Monday and Wednesday**). **Uniform must be named**
- **Internet safety must be abided by at all times**
- Texts will be sent home with any additional key information
- **Snacks - please provide your child with a morning snack as necessary**



At Martin Primary School in 2025/26 we aim to make our school even better by...

...promoting challenge across the curriculum for all children, with a particular focus on higher attainers

...ensuring a consistent approach to teaching maths across the school

...continuing to embed our sustainability strategy

...embedding the trauma informed approach to supporting children's behaviour

Internet Safety

- Parents and carers must be extra vigilant about what children are doing online and make sure that they understand how to stay safe
- Screen time should be limited
- Monthly E-safety newsletters will continue to be sent out
- There are some excellent reference sites with helpful tips on how to do this:

<https://www.parents.parentzone.org.uk/>

[https://www.thinkuknow.co.uk/parents?utm_source=Thinkuknow&utm_campaign=5b5261dab9-TUK ONLINE SAFETY AT HOME 25 08 20&utm_medium=email&utm_term=0_0b54505554-5b5261dab9-55416405](https://www.thinkuknow.co.uk/parents?utm_source=Thinkuknow&utm_campaign=5b5261dab9-TUK_ONLINE_SAFETY_AT_HOME_25_08_20&utm_medium=email&utm_term=0_0b54505554-5b5261dab9-55416405)



Other notes...

- **Reading books** will be sent home and changed on a set day weekly. Please write a note in the Reading Record about how it went
- Please advise us of any **After School Clubs** your child will be attending (via the School Office)
- In December, Year 2 classes will perform a **Christmas show** to their parents / carers
 - 2CF (Tues 9th Dec); 2OD (Wed 3rd Dec); 2EB (Thurs 11th Dec)

Attendance and punctuality

- Our target for attendance is 96% + for all children
- Attendance is directly linked to attainment and we want children to have the opportunity to reach their full potential
- School is an opportunity to develop social and life skills
- Being on time leads to a calm and effective start of the day for your child and the children in their class

Attendance percentage	Days missed over a school year
100 %	0 days
95 %	10 days
90 %	20 days
85 %	30 days
80 %	40 days



Events

Film Night



Summer Fair



Christmas Fair



Donations

Kindles



Playground equipment



Interactive whiteboards



Chromebooks

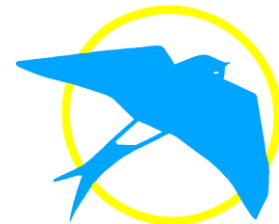


...and much more



- We are only able to hold our wonderful community events (e.g. Christmas and summer fairs) if parents/carers volunteer to help
- Please get involved – it's a great way to meet people and get to know the school: please email [**mhsasecretary@gmail.com**](mailto:mhsasecretary@gmail.com)
- Class representatives needed for every class

Martin Primary Fund



Parent/carer **voluntary** contribution scheme

This includes funding for many of the things that make Martin so special, for example:

- our wonderful Forest School
- music resources
- computing resources
- playground equipment.

If you are able to donate on a regular basis our bank details are:

Name: Martin Primary Fund

Account number: 33271460

Sort code: 30-65-41

(Please include your name as a reference in case of any queries)

More About Martin Meetings

Join us from 9am in the portakabin

Friday 19th September- Meet the Governors

Come and meet some of the members of the Governing body and find out about how they support our school.



Friday 3rd October - Parenting in the Digital Age

(in the main hall)

An engaging workshop for parents and carers led by Nova Eden examining how technology is reshaping childhood and influencing young people's mental health and well-being.



Friday 17th October- School information

Mrs Chater will share important information about the school. Useful for all adults, particularly those new to the school.



Future meetings:

- Year 1 Phonics- information on the teaching of phonics, how to support your children at home and the Phonics Screening Check later in the year
- Martin Home School Association (MHSA)
- Year 4 Multiple Tables Check- information about the MTC in June and how to support your child at home

And finally ...

- Parent consultations will take place on Tuesday 18th November and Thursday 20th November from 4pm to 7pm. More details to follow

- **Any questions?**

