



Welcome to Reception



Robins



Habiba Bawumia
Class teacher &
EYFS Leader



Sonia
Lapwood
Nursery
Nurse

The Reception Team

Foxes



Charlotte Webster
Class teacher



Imrana Naz
Nursery
Nurse

Badgers



Marilyn Wilkinson
(Tue – Thu)
Teaching Assistant



Ruth Traynor
Class Teacher



Lesley Smith & Vikki Ingram
Nursery Nurses



Priya Bhudia
EYFS support

Expectations – our school charter

- We are kind to each other
- We talk respectfully and listen to each other
- We keep our hands and feet to ourselves
- We walk at all times in the building
- We follow instructions immediately
- We always use our manners
- We look after the equipment in the classroom and the playground

Helpful Information

<https://foundationyears.org.uk/>

<https://www.gov.uk/government/publications/development-matters--2>



Characteristics of Effective Learning in the EYFS

The characteristics support the children in all aspects of their learning. It is broken down into 3 strands.

- * **playing and exploring** - children investigate and 'have a go'
- * **active learning** - children concentrate and keep on trying
- * **creating and thinking critically** - children develop own ideas, and develop strategies for doing things

At school this is supported through our freeflow environment, child initiated tasks and challenging activities.

How can you help?

Encourage independence and allow them to take risks. Don't do everything for them.

Early Years Foundation Stage

4 Specific Areas

3 Prime Areas

Personal, Social & Emotional Development

- Building Relationships
- Managing Self
- Self-Regulation

Communication & language

- Listening, Attention & Understanding
- Speaking

Physical development

- Gross motor skills
- Fine motor skills

Literacy

- Comprehension
- Word Reading
- Writing

Mathematics

- Number
- Numerical Patterns

Understanding the World

- People, Communities and Cultures
- The Natural World
- Past and Present

Expressive Arts & Design

- Creating with Materials
- Being Imaginative and Expressive

Tapestry



- * Children will be observed termly
- * Look out for your child's next steps in the observations.
- * You can also upload observations for staff to see.
- * Weekly/ fortnightly updates about what we have been learning about and how to support at home.
- * Should receive link via email (check junk mail)

Observation and Assessment

- *During the Autumn and Spring term your child will have a focus week with either the class teacher or Nursery nurse. You will receive information via Tapestry.
- *Parents evenings in the autumn and spring term to talk about your child's development and progress with either the class teacher or Nursery nurse.
- * EYFS Profile at the end of Reception: each child's level of development is assessed against the 17 early learning goals (see website):
 - at **expected** levels of development
 - not yet reaching expected levels (**'emerging'**)
- * End of year report includes characteristics of learning

**At Martin Primary School in 2025/26 we aim to
make our school even better by...**

**...promoting challenge across the curriculum
for all children, with a particular focus on
higher attainers**

**...ensuring a consistent approach to teaching
maths across the school**

**...continuing to embed our sustainability
strategy**

**...embedding the trauma informed approach
to supporting children's behaviour**

Reminders

- Full attendance and punctuality are expected. The register is taken at **8:55am**. Please collect your child promptly from their classroom door at **3.25pm**.
- Full and correct uniform must be worn every day except on PE days when PE Kits should be worn (**Thursday**).
Uniform must be named
- Texts will be sent home with any additional key information
- **Snacks - please do not send children with snacks as we provide them.**
- No toys please



Attendance and punctuality

- Our target for attendance is 96% + for all children
- Attendance is directly linked to attainment and we want children to have the opportunity to reach their full potential
- School is an opportunity to develop social and life skills
- Being on time leads to a calm and effective start of the day for your child and the children in their class

Attendance percentage	Days missed over a school year
100 %	0 days
95 %	10 days
90 %	20 days
85 %	30 days
80 %	40 days



Internet Safety

- Parents and carers must be extra vigilant about what children are doing online and make sure that they understand how to stay safe
- Screen time should be limited
- Monthly E-safety newsletters will continue to be sent out
- There are some excellent reference sites with help how to do this:

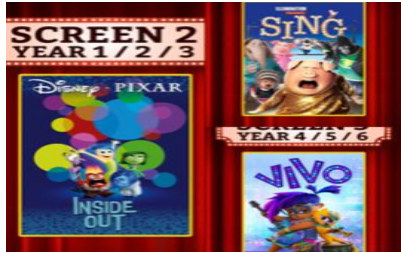


<https://www.parents.parentzone.org.uk/>

https://www.thinkuknow.co.uk/parents?utm_source=Thinkuknow&utm_campaign=5b5261dab9-TUK_ONLINE_SAFETY_AT_HOME_25_08_20&utm_medium=email&utm_term=0_0b54505554-5b5261dab9-55416405

Events

Film Night



Summer Fair



Christmas Fair



Donations

Kindles



Playground equipment



Interactive whiteboards



Chromebooks

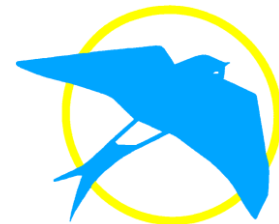


...and much more



- We are only able to hold our wonderful community events (e.g. Christmas and summer fairs) if parents/carers volunteer to help
- Please get involved – it's a great way to meet people and get to know the school: please email [**mhsasecretary@gmail.com**](mailto:mhsasecretary@gmail.com)
- Class representatives needed for every class

Martin Primary Fund



Parent/carer **voluntary** contribution scheme

This includes funding for many of the things that make Martin so special, for example:

- our wonderful Forest School
- music resources
- computing resources
- playground equipment.

If you are able to donate on a regular basis our bank details are:

Name: Martin Primary Fund

Account number: 33271460

Sort code: 30-65-41

(Please include your name as a reference in case of any queries)

More About Martin Meetings

Join us from 9am in the portakabin

Friday 3rd October - Parenting in the Digital Age

(in the main hall)

An engaging workshop for parents and carers led by Nova Eden examining how technology is reshaping childhood and influencing young people's mental health and well-being



Friday 17th October- School information

Mrs Chater will share important information about the school. Useful for all adults, particularly those new to the school.



And finally ...

- Parent consultations will take place on Tuesday 18th November and Thursday 20th November from 4pm to 7pm. More details to follow

- **Any questions?**

